



DECONTACTOR™ – 20A

Switch Rated Plugs & Receptacles

Ratings

- Voltage**
600VAC, 250VDC
- Switch Ratings (AC Only)**
Branch Circuit & Motor Circuit Disconnect Switching
- Horsepower Ratings**

| | | |
|------|----|----------|
| 120V | 1Ø | 1/2 hp |
| 208V | 3Ø | 3 hp |
| 240V | 3Ø | 1 1/2 hp |
| 480V | 3Ø | 5 hp |
| 600V | 3Ø | 7 1/2 hp |
- Short Circuit Rating**
100kA Close & Withstand
Testing was performed with RK1 current limiting fuses sized at 400% of the highest full load motor ampacity associated with the devices hp rating.
- Environmental Ratings**
NEMA 3R, IP54/IP55*
* IP54 when the plug & receptacle are mated. IP55 on the receptacle alone when the lid is latched closed.
- Temperature Range**
Min -40°F/Max 140°F
See pg 204 for temps below -15°F.
- Wiring Capacity**
Min 14 AWG Max 8 AWG
Aux Contacts - Max 14 AWG
- Listings**
UL, CSA, NOM, IEC, CE*
* Contact Customer Service

Receptacle (female)



Don't forget to add installation accessories to your order

Inlet (male)



| Voltage | Polarity | Part # Poly |
|----------|----------|-------------|
| 120/208V | 3P+N+G | 33-14167 |
| 125V | 1P+N+G | 33-14075 |
| 125/250V | 2P+N+G | 33-14076 |
| 208V | 2P+G | 33-14162 |
| 208V | 3P+G | 33-14163 |
| 250V | 2P+G | 33-14072 |
| 250V | 3P+G | 33-14073 |
| 277V | 1P+N+G | 33-14045 |
| 277/480V | 3P+N+G | 33-14047 |
| 347/600V | 3P+N+G | 33-14147 |
| 480V | 2P+G | 33-14042 |
| 480V | 3P+G | 33-14043 |
| 600V | 2P+G | 33-14142 |
| 600V | 3P+G | 33-14143 |

| Voltage | Polarity | Part # Poly |
|----------|----------|-------------|
| 120/208V | 3P+N+G | 33-18167 |
| 125V | 1P+N+G | 33-18075 |
| 125/250V | 2P+N+G | 33-18076 |
| 208V | 2P+G | 33-18162 |
| 208V | 3P+G | 33-18163 |
| 250V | 2P+G | 33-18072 |
| 250V | 3P+G | 33-18073 |
| 277V | 1P+N+G | 33-18045 |
| 277/480V | 3P+N+G | 33-18047 |
| 347/600V | 3P+N+G | 33-18147 |
| 480V | 2P+G | 33-18042 |
| 480V | 3P+G | 33-18043 |
| 600V | 2P+G | 33-18142 |
| 600V | 3P+G | 33-18143 |

Other voltage configurations are available – contact customer service

Main Options



Auxiliary/Pilot Contacts



Mushroom Pawl



Padlockable Mushroom Pawl



Self-Ejecting Devices

* Requires straight insertion receptacle or inlet and self-ejecting plug or connector



See pgs 181-190 for detailed information on these options

Receptacle Options

Suffix

| | |
|---------------------------------|---------------------|
| With 2 Auxiliary/Pilot Contacts | Recept # - 972 |
| NEMA 4X Watertightness | Recept # - 4X |
| Straight Insertion | Recept # - A188 |
| Self-Ejecting Connector Release | Recept # - 348-A188 |
| Mushroom Pawl | Recept # - 375 |
| Locking Mushroom Pawl | Recept # - 845 |
| Padlockable Mushroom Pawl | Recept # - 843 |
| Metal Pawl (on poly receptacle) | Recept # - 824 |
| Closed Lid Configuration | Recept # - NC |
| With Auxiliary Switch | Recept # - 270 |

Inlet Options

Suffix

| | |
|---------------------------------|--------------------|
| With 2 Auxiliary/Pilot Contacts | Inlet # - 972 |
| NEMA 4X Watertightness | Inlet # - 4X |
| Self-Ejecting Plug Release | Inlet # - 338-A188 |
| Straight Insertion | Inlet # - A188 |
| With No Lockout Hole | Inlet # - A155 |
| For Auxiliary Switch | Inlet # - NNF |

Notes: * Order inlet with P+N+G configuration and receptacle with P+G configuration

DS20 Order Example:

To order 2 auxiliary/pilot contacts on an inlet and receptacle add -972 to the part numbers.

DS20 Poly inlet 2P+G=33-18162-972

DS20 Poly receptacle 2P+G=33-14162-972

Appropriate accessory part numbers must also be included on the order.

Installation Accessories

Handles



Not NEMA 3R

| NPT | Poly Handle | Cable Range | Nylon Handle | Neoprene Handle | Poly Handle w/Clamp & Bushing |
|--------|-------------|---------------|--------------|-----------------|-------------------------------|
| 1/2" | 1PH12 | .20 - .83 | FH111 | - | - |
| 3/4" | 1PH34 | .32 - .88 | - | 31-111 | - |
| 1" | 1PH1 | .750 - .875 | - | - | 1PM514 |
| 1 1/4" | 1PH114 | .875 - 1.000 | - | - | 1PM516 |
| | | 1.000 - 1.125 | - | - | 1PM518 |
| | | 1.125 - 1.250 | - | - | 1PM520 |
| | | 1.250 - 1.375 | - | - | 1PM522 |

Notes: • Finger draw plates are recommended for easier connector closure on cord to cord assemblies.
• For available cord grips, see pgs 177-178.

Angles



| Nylon 30° Angle | Metal 30° Angle | Metal Angle FS/FD Box 30° | Metal Straight Adapter |
|-----------------|-----------------|---------------------------|------------------------|
| MP2 | MA2 | MAFS2 | MS2 |

NPT Guidelines

| Cable Range | NPT | Cable Range | NPT |
|--------------|--------|---------------|--------|
| .062 - .5 | 1/2" | .890 - 1.650 | 1 1/2" |
| .187 - .75 | 3/4" | 1.125 - 2.438 | 2" |
| .437 - 1.10 | 1" | 1.750 - 2.565 | 2 1/2" |
| .750 - 1.375 | 1 1/4" | | |

NPT sizes are determined by the cable diameter and third party cord grip.

Junction Boxes



| NPT | Metal Box | Metal Box with Nylon Angle | Poly* Conduit Entry | Poly 70°** Wall Box |
|--------|-----------|----------------------------|---------------------|---------------------|
| 1/2" | MB312 | 31-1A053-080-12 | MC212 | 51-BA058 |
| 3/4" | MB334 | 31-1A053-080-34 | MC234 | 51-BA058 |
| 1" | MB31 | 31-1A053-080-1 | - | 51-BA058 |
| 1 1/4" | MB3114 | 31-1A053-080-114 | - | 51-BA058 |

* For poly devices only ** UL pending. 70° boxes are not drilled. Contact customer service if factory drilling is required.

Miscellaneous Accessories



* Set of Two (2)

For Male Devices Only

For Male Devices Only

| Finger Drawplates | Protective Cap | Padlockable Plug Cap Poly | Inlet Spring-Loaded Cap |
|-------------------|----------------|---------------------------|-------------------------|
| FDP2 | 31-1A126 | DS1PC | 31-1A226 |

* Recommended for cord to cord assembly applications, for easier connector closure

Order Example

A typical order should include an inlet part number, a receptacle part number **AND** the matching handles, angles or other required accessories.



Male Inlet with Handle (Plug)
33-18075 + FH111



Female Receptacle with Angle Adapter
33-14075 + MP2



DECONTACTOR™ – 30A

Switch Rated Plugs & Receptacles

Ratings

- Voltage**
600VAC, 250VDC
- Switch Ratings (AC Only)**
Branch Circuit & Motor Circuit Disconnect Switching
- Horsepower Ratings**
 - 120V 1Ø 3/4 hp
 - 240V 1Ø 2 hp
 - 208V 3Ø 3 hp
 - 240V 3Ø 3 hp
 - 480V 3Ø 10 hp
- Short Circuit Rating**
100kA Close & Withstand
Testing was performed with RK1 current limiting fuses sized at 400% of the highest full load motor ampacity associated with the devices hp rating.
- Environmental Ratings**
NEMA 3R, IP54/IP55*
* IP54 when the plug & receptacle are mated. IP55 on the receptacle alone when the lid is latched closed.
- Temperature Range**
Min -40°F/Max 140°F
See pg 204 for temps below -15°F.
- Wiring Capacity**
Min 14 AWG Max 6 AWG
Aux Contacts - Max 14 AWG
- Listings**
UL, CSA, NOM, IEC, CE*
* Contact Customer Service

Receptacle (female)



Don't forget to add installation accessories to your order

Inlet (male)



| Voltage | Polarity | Part # Poly |
|----------|----------|-------------|
| 120/208V | 3P+N+G | 33-34167 |
| 125V | 1P+N+G | 33-34075 |
| 125/250V | 2P+N+G | 33-34076 |
| 208V | 2P+G | 33-34162 |
| 208V | 3P+G | 33-34163 |
| 250V | 2P+G | 33-34072 |
| 250V | 3P+G | 33-34073 |
| 277V | 1P+N+G | 33-34045 |
| 277/480V | 3P+N+G | 33-34047 |
| 347/600V | 3P+N+G | 33-34147 |
| 480V | 2P+G | 33-34042 |
| 480V | 3P+G | 33-34043 |
| 600V | 2P+G | 33-34142 |
| 600V | 3P+G | 33-34143 |

| Voltage | Polarity | Part # Poly |
|----------|----------|-------------|
| 120/208V | 3P+N+G | 33-38167 |
| 125V | 1P+N+G | 33-38075 |
| 125/250V | 2P+N+G | 33-38076 |
| 208V | 2P+G | 33-38162 |
| 208V | 3P+G | 33-38163 |
| 250V | 2P+G | 33-38072 |
| 250V | 3P+G | 33-38073 |
| 277V | 1P+N+G | 33-38045 |
| 277/480V | 3P+N+G | 33-38047 |
| 347/600V | 3P+N+G | 33-38147 |
| 480V | 2P+G | 33-38042 |
| 480V | 3P+G | 33-38043 |
| 600V | 2P+G | 33-38142 |
| 600V | 3P+G | 33-38143 |

Other voltage configurations are available – contact customer service

Main Options



Auxiliary/Pilot Contacts



Mushroom Pawl



Padlockable Mushroom Pawl



Self-Ejecting Devices

* Requires straight insertion receptacle or inlet and self-ejecting plug or connector

See pgs 181-190 for detailed information on these options

Receptacle Options

Suffix

| | |
|---------------------------------|---------------------|
| With 2 Auxiliary/Pilot Contacts | Recept # - 972 |
| With 3 Auxiliary/Pilot Contacts | Recept # - 973+ |
| With 4 Auxiliary/Pilot Contacts | Recept # - 974+ |
| NEMA 4X Watertightness | Recept # - 4X |
| Straight Insertion | Recept # - A188 |
| Self-Ejecting Connector Release | Recept # - 348-A188 |
| Mushroom Pawl | Recept # - 375 |
| Locking Mushroom Pawl | Recept # - 845 |
| Padlockable Mushroom Pawl | Recept # - 843 |
| Metal Pawl (on poly receptacle) | Recept # - 824 |
| Closed Lid Configuration | Recept # - NC |
| With Auxiliary Switch | Recept # - 270 |
| Recess Plate | Recept # - 142 |

Notes: + Not UL/CSA Listed

Inlet Options

Suffix

| | |
|---------------------------------|--------------------|
| With 2 Auxiliary/Pilot Contacts | Inlet # - 972 |
| With 3 Auxiliary/Pilot Contacts | Inlet # - 973+ |
| With 4 Auxiliary/Pilot Contacts | Inlet # - 974+ |
| NEMA 4X Watertightness | Inlet # - 4X |
| Self-Ejecting Plug Release | Inlet # - 338-A188 |
| Straight Insertion | Inlet # - A188 |
| With No Lockout Hole | Inlet # - A155 |
| For Auxiliary Switch* | Inlet # - NNF |

Notes: * Order inlet with P+N+G configuration and receptacle with P+G configuration

DS30 Order Example:

To order 2 auxiliary contacts on an inlet and receptacle add -972 to the part numbers.

DS30 Poly inlet 3P+G=33-38043-972

DS30 Poly receptacle 3P+G=33-34043-972

Appropriate accessory part numbers must also be included on the order.

Installation Accessories

Handles



Not NEMA 3R

Makes connector closures easier

| NPT | Poly Handle | Cable Range | Nylon Handle | Neoprene Handle | Poly Handle w/Clamp & Bushing | Poly Handle w/built in Draw Grips |
|--------|-------------|---------------|--------------|-----------------|-------------------------------|-----------------------------------|
| 1/2" | 3PH12 | .38 - 1.12 | - | 31-311 | - | - |
| 3/4" | 3PH34 | .39 - 1.18 | FH311 | - | - | FH311-473 |
| 1" | 3PH1 | .750 - .875 | - | - | 3PM514 | - |
| 1 1/4" | 3PH114 | .875 - 1.000 | - | - | 3PM516 | - |
| | | 1.000 - 1.125 | - | - | 3PM518 | - |
| | | 1.125 - 1.250 | - | - | 3PM520 | - |
| | | 1.250 - 1.375 | - | - | 3PM522 | - |

Notes: • Finger draw plates are recommended for easier connector closure on cord to cord assemblies.
• For available cord grips, see pgs 177-178.

Angles



| Nylon 30° Angle | Metal 30° Angle | Metal 70° Angle | Metal Angle FS/FD Box 30° | Metal Straight Adapter |
|-----------------|-----------------|-----------------|---------------------------|------------------------|
| MP3 | MA3 | 89-3A027 | MAFS3 | MS3 |

NPT Guidelines

| Cable Range | NPT | Cable Range | NPT |
|--------------|--------|---------------|--------|
| .062 - .5 | 1/2" | .890 - 1.650 | 1 1/2" |
| .187 - .75 | 3/4" | 1.125 - 2.438 | 2" |
| .437 - 1.10 | 1" | 1.750 - 2.565 | 2 1/2" |
| .750 - 1.375 | 1 1/4" | | |

NPT sizes are determined by the cable diameter and third party cord grip.

Junction Boxes



| NPT | Metal Box | Metal Box with Nylon Angle | Poly* Conduit Entry | Poly 70°** Wall Box |
|--------|-----------|----------------------------|---------------------|---------------------|
| 1/2" | MB312 | 31-3A053-080-12 | MC312 | 51-CA058 |
| 3/4" | MB334 | 31-3A053-080-34 | MC334 | 51-CA058 |
| 1" | MB31 | 31-3A053-080-1 | MC31 | 51-CA058 |
| 1 1/4" | MB3114 | 31-3A053-080-114 | - | 51-CA058 |

* For poly devices only

** 70° boxes are not drilled. Contact customer service if factory drilling is required.

Miscellaneous Accessories



* Set of Two (2)

For Male Devices Only

For Male Devices Only

| Finger Drawplates | Protective Cap | Padlockable Plug Cap Poly | Inlet Spring-Loaded Cap |
|-------------------|----------------|---------------------------|-------------------------|
| FDP3 | 31-3A126 | DS3PC | 31-3A226 |

* Recommended for cord to cord assembly applications, for easier connector closure

Order Example

A typical order should include an inlet part number, a receptacle part number **AND** the matching handles, angles or other required accessories.



Male Inlet with Handle (Plug)
33-38043 + FH311



Female Receptacle with Angle Adapter
33-34043 + MP3



DECONTACTOR™ – 60A

Switch Rated Plugs & Receptacles

Ratings

- Voltage**
600 VAC, 250 VDC
- Switch Ratings (AC Only)**
Branch Circuit & Motor Circuit Disconnect Switching
- Horsepower Ratings**

| | | |
|------|----|----------|
| 120V | 1Ø | 2 hp |
| 240V | 1Ø | 3 hp |
| 208V | 3Ø | 7 1/2 hp |
| 240V | 3Ø | 7 1/2 hp |
| 480V | 3Ø | 20 hp |
| 600V | 3Ø | 25 hp |
- Short Circuit Rating**
100kA Close & Withstand
Testing was performed with RK1 current limiting fuses sized at 400% of the highest full load motor ampacity associated with the devices hp rating.
- Environmental Ratings**
NEMA 3R, IP54/IP55*
* IP54 when the plug & receptacle are mated. IP55 on the receptacle alone when the lid is latched closed.
- Temperature Range**
Min -40°F/Max 140°F
See pg 204 for temps below -15°F.
- Wiring Capacity**
Min 10 AWG Max 2 AWG
Aux Contacts - Max 14 AWG
- Listings**
UL, CSA, NOM, IEC, CE*
* Contact Customer Service

Receptacle (female)



Don't forget to add installation accessories to your order

Inlet (male)



| Voltage | Polarity | Part # | |
|----------|----------|----------|----------|
| | | Poly | Metal |
| 120/208V | 3P+N+G | 33-64167 | 37-64167 |
| 125V | 1P+N+G | 33-64075 | 37-64075 |
| 125/250V | 2P+N+G | 33-64076 | 37-64076 |
| 208V | 2P+G | 33-64162 | 37-64162 |
| 208V | 3P+G | 33-64163 | 37-64163 |
| 250V | 2P+G | 33-64072 | 37-64072 |
| 250V | 3P+G | 33-64073 | 37-64073 |
| 277V | 1P+N+G | 33-64045 | 37-64045 |
| 277/480V | 3P+N+G | 33-64047 | 37-64047 |
| 347/600V | 3P+N+G | 33-64147 | 37-64147 |
| 480V | 2P+G | 33-64042 | 37-64042 |
| 480V | 3P+G | 33-64043 | 37-64043 |
| 600V | 2P+G | 33-64142 | 37-64142 |
| 600V | 3P+G | 33-64143 | 37-64143 |

| Voltage | Polarity | Part # | |
|----------|----------|----------|----------|
| | | Poly | Metal |
| 120/208V | 3P+N+G | 33-68167 | 37-68167 |
| 125V | 1P+N+G | 33-68075 | 37-68075 |
| 125/250V | 2P+N+G | 33-68076 | 37-68076 |
| 208V | 2P+G | 33-68162 | 37-68162 |
| 208V | 3P+G | 33-68163 | 37-68163 |
| 250V | 2P+G | 33-68072 | 37-68072 |
| 250V | 3P+G | 33-68073 | 37-68073 |
| 277V | 1P+N+G | 33-68045 | 37-68045 |
| 277/480V | 3P+N+G | 33-68047 | 37-68047 |
| 347/600V | 3P+N+G | 33-68147 | 37-68147 |
| 480V | 2P+G | 33-68042 | 37-68042 |
| 480V | 3P+G | 33-68043 | 37-68043 |
| 600V | 2P+G | 33-68142 | 37-68142 |
| 600V | 3P+G | 33-68143 | 37-68143 |

Other voltage configurations are available – contact customer service

Main Options



Auxiliary/Pilot Contacts



Mushroom Pawl



Padlockable Mushroom Pawl



Self-Ejecting Devices

* Requires straight insertion receptacle or inlet and self-ejecting plug or connector

See pgs 181-190 for detailed information on these options

Receptacle Options

Suffix

| | |
|---------------------------------|---------------------|
| With 2 Auxiliary/Pilot Contacts | Recept # - 972 |
| With 3 Auxiliary/Pilot Contacts | Recept # - 263+ |
| NEMA 4X Watertightness | Recept # - 4X |
| Straight Insertion | Recept # - A188 |
| Self-Ejecting Connector Release | Recept # - 348-A188 |
| Mushroom Pawl | Recept # - 375 |
| Locking Mushroom Pawl | Recept # - 845 |
| Padlockable Mushroom Pawl | Recept # - 843 |
| Metal Pawl (on poly receptacle) | Recept # - 824 |
| Closed Lid Configuration | Recept # - NC |
| With Auxiliary Switch | Recept # - 270 |
| Recess Plate | Recept # - 142 |

Notes: + Not available for metal devices, not UL/CSA listed

Inlet Options

Suffix

| | |
|---------------------------------|--------------------|
| With 2 Auxiliary/Pilot Contacts | Inlet # - 972 |
| With 3 Auxiliary/Pilot Contacts | Inlet # - 263+ |
| NEMA 4X Watertightness | Inlet # - 4X |
| Self-Ejecting Plug Release | Inlet # - 338-A188 |
| Straight Insertion | Inlet # - A188 |
| With No Lockout Hole | Inlet # - A155 |
| For Auxiliary Switch* | Inlet # - NNF |

Notes: * Order inlet with P+N+G configuration and receptacle with P+G configuration

DS60 Order Example:

To order 2 auxiliary/pilot contacts on an inlet and receptacle add -972 to the part numbers.

DS60 Poly inlet 3P+G=33-68043-972

DS60 Poly receptacle 3P+G=33-64043-972

Appropriate accessory part numbers must also be included on the order.

Installation Accessories

Unless indicated otherwise, accessories can be used with either poly or metal plugs and receptacles

Handles



| NPT | Poly Handle | Metal* Handle | Cable Range | Nylon Handle | Neoprene Handle | Poly Handle w/Clamp & Bushing | Poly Handle w/built in Draw Grips |
|--------|-------------|---------------|---------------|--------------|-----------------|-------------------------------|-----------------------------------|
| 1/2" | 6PH12 | 6H12 | .50 - 1.25 | - | 31-611 | - | - |
| 3/4" | 6PH34 | 6H34 | .51 - 1.38 | FH611 | - | - | FH611-473 |
| 1" | 6PH1 | 6H1 | 1.250 - 1.375 | - | - | 6PM622 | - |
| 1 1/4" | 6PH114 | 6H114 | 1.438 - 1.562 | - | - | 6PM625 | - |
| 1 1/2" | 6PH112 | 6H112 | 1.562 - 1.688 | - | - | 6PM627 | - |
| | | | 1.688 - 1.812 | - | - | 6PM629 | - |

Notes: • For available cord grips, see pgs 177-178.
* For metal devices only

• For a guideline of NPT sizes based on cable ranges, see DS30 on pg 38.

Angles



| Nylon 30° Angle | Metal 30° Angle | Metal 70° Angle | Metal Angle+ Oversized 30° | Metal Straight Adapter | Metal Lateral Angle 30° |
|-----------------|-----------------|-----------------|----------------------------|------------------------|-------------------------|
| MP6 | MA6 | 89-6A027 | MA660 | MS6 | MAB6 |

* Mounts on oversize box only. Order with MB10 box. See page 44.

Junction Boxes



| NPT | Metal Box | Metal Box with Nylon Angle | Metal Box with Metal Angle | Poly* Conduit Entry | Poly 70°** Wall Box |
|--------|-----------|----------------------------|----------------------------|---------------------|---------------------|
| 1/2" | - | - | - | MC612 | 51-DA058 |
| 3/4" | - | - | - | MC634 | 51-DA058 |
| 1" | MB61 | 31-6A053-080-1 | 39-6A053-080-1 | MC61 | 51-DA058 |
| 1 1/4" | MB6114 | 31-6A053-080-114 | 39-6A053-080-114 | MC6114 | 51-DA058 |
| 1 1/2" | MB6112 | 31-6A053-080-112 | 39-6A053-080-112 | - | 51-DA058 |
| 2" | MB62 | 31-6A053-080-2 | 39-6A053-080-2 | - | 51-DA058 |

* For poly devices only

** 70° boxes are not drilled. Contact customer service if factory drilling is required.

Miscellaneous Accessories



| Finger Drawplates | Protective Cap | Padlockable Plug Cap Poly | Padlockable Cap Aluminum | Inlet Spring-Loaded cap | Cord Grip with Mesh |
|-------------------|----------------|---------------------------|--------------------------|-------------------------|---------------------|
| FDP6 | 31-6A126 | DS6PC | DS6MC | 31-6A226 | see pgs 177-178 |

Accessory Spotlight

Finger Drawplates



Finger drawplates are recommended for easier connector closure on cord to cord assemblies.

Order Example

A typical order should include an inlet part number, a receptacle part number **AND** the matching handles, angles or other required accessories.



Male Inlet with Handle (Plug)
33-68043 + FH611



Female Receptacle with Angle Adapter
33-64043 + MP6



DECONTACTOR™ – 100A Switch Rated Plugs & Receptacles

Ratings

- Voltage**
600 VAC, 250 VDC
- Switch Ratings (AC Only)**
Branch Circuit & Motor Circuit Disconnect Switching
- Horsepower Ratings**

| | | |
|------|----|----------|
| 120V | 1Ø | 2 hp |
| 240V | 1Ø | 3 hp |
| 208V | 3Ø | 7 1/2 hp |
| 240V | 3Ø | 7 1/2 hp |
| 480V | 3Ø | 20 hp |
| 600V | 3Ø | 25 hp |
- Short Circuit Rating**
100kA Close & Withstand
Testing was performed with RK1 current limiting fuses sized at 400% of the highest full load motor ampacity associated with the devices hp rating.
- Environmental Ratings**
NEMA 3R, IP54/IP55*
* IP54 when the plug & receptacle are mated. IP55 on the receptacle alone when the lid is latched closed.
- Temperature Range**
Min -40°F/Max 140°F
See pg 204 for temps below -15°F.
- Wiring Capacity**
Min 10 AWG Max 2 AWG
Aux Contacts - Max 14 AWG
- Listings**
UL, CSA, NOM, IEC, CE*
* Contact Customer Service

Receptacle (female)



Don't forget to add installation accessories to your order

Inlet (male)



| Voltage | Polarity | Part # | |
|----------|----------|----------------|----------------|
| | | Poly | Metal |
| 120/208V | 3P+N+G | 33-64237-C-K16 | 37-64237-C-K16 |
| 125V | 1P+N+G | 33-64175-C-K07 | 37-64175-C-K07 |
| 125/250V | 2P+N+G | 33-64176-C-K07 | 37-64176-C-K07 |
| 208V | 2P+G | 33-64232-C-K16 | 37-64232-C-K16 |
| 208V | 3P+G | 33-64233-C-K16 | 37-64233-C-K16 |
| 250V | 2P+G | 33-64172-C-K07 | 37-64172-C-K07 |
| 250V | 3P+G | 33-64173-C-K07 | 37-64173-C-K07 |
| 277V | 1P+N+G | 33-64245-C-K04 | 37-64245-C-K04 |
| 277/480V | 3P+N+G | 33-64247-C-K04 | 37-64247-C-K04 |
| 347/600V | 3P+N+G | 33-64187-C-K14 | 37-64187-C-K14 |
| 480V | 2P+G | 33-64242-C-K04 | 37-64242-C-K04 |
| 480V | 3P+G | 33-64243-C-K04 | 37-64243-C-K04 |
| 600V | 2P+G | 33-64182-C-K14 | 37-64182-C-K14 |
| 600V | 3P+G | 33-64183-C-K14 | 37-64183-C-K14 |

| Voltage | Polarity | Part # | |
|----------|----------|----------------|----------------|
| | | Poly | Metal |
| 120/208V | 3P+N+G | 33-68237-C-K16 | 37-68237-C-K16 |
| 125V | 1P+N+G | 33-68175-C-K07 | 37-68175-C-K07 |
| 125/250V | 2P+N+G | 33-68176-C-K07 | 37-68176-C-K07 |
| 208V | 2P+G | 33-68232-C-K16 | 37-68232-C-K16 |
| 208V | 3P+G | 33-68233-C-K16 | 37-68233-C-K16 |
| 250V | 2P+G | 33-68172-C-K07 | 37-68172-C-K07 |
| 250V | 3P+G | 33-68173-C-K07 | 37-68173-C-K07 |
| 277V | 1P+N+G | 33-68245-C-K04 | 37-68245-C-K04 |
| 277/480V | 3P+N+G | 33-68247-C-K04 | 37-68247-C-K04 |
| 347/600V | 3P+N+G | 33-68187-C-K14 | 37-68187-C-K14 |
| 480V | 2P+G | 33-68242-C-K04 | 37-68242-C-K04 |
| 480V | 3P+G | 33-68243-C-K04 | 37-68243-C-K04 |
| 600V | 2P+G | 33-68182-C-K14 | 37-68182-C-K14 |
| 600V | 3P+G | 33-68183-C-K14 | 37-68183-C-K14 |

Other voltage configurations are available – contact customer service

Main Options



Auxiliary/Pilot Contacts



Mushroom Pawl



Padlockable Mushroom Pawl



Self-Ejecting Devices

* Requires straight insertion receptacle or inlet and self-ejecting plug or connector



See pgs 181-190 for detailed information on these options

Receptacle Options

Suffix

| | |
|---------------------------------|---------------------|
| With 2 Auxiliary/Pilot Contacts | Recept # - 972 |
| With 3 Auxiliary/Pilot Contacts | Recept # - 263+ |
| NEMA 4X Watertightness | Recept # - 4X |
| Straight Insertion | Recept # - A188 |
| Self-Ejecting Connector Release | Recept # - 348-A188 |
| Mushroom Pawl | Recept # - 375 |
| Locking Mushroom Pawl | Recept # - 845 |
| Padlockable Mushroom Pawl | Recept # - 843 |
| Metal Pawl (on poly receptacle) | Recept # - 824 |
| Closed Lid Configuration | Recept # - NC |
| With Auxiliary Switch | Recept # - 270 |
| Recess Plate | Recept # - 142 |

Notes: + Not available for metal devices, not UL/CSA listed

Inlet Options

Suffix

| | |
|---------------------------------|--------------------|
| With 2 Auxiliary/Pilot Contacts | Inlet # - 972 |
| With 3 Auxiliary/Pilot Contacts | Inlet # - 263+ |
| NEMA 4X Watertightness | Inlet # - 4X |
| Self-Ejecting Plug Release | Inlet # - 338-A188 |
| Straight Insertion | Inlet # - A188 |
| With No Lockout Hole | Inlet # - A155 |
| For Auxiliary Switch* | Inlet # - NNF |

Notes: * Order inlet with P+N+G configuration and receptacle with P+G configuration

DS100C Order Example:

To order 2 auxiliary/pilot contacts on an inlet and receptacle add **-972** to the part numbers.

DS100C Poly inlet 3P+G=33-68243-C-K04-**972**

DS100C Poly receptacle 3P+G=33-64243-C-K04-**972**

Appropriate accessory part numbers must also be included on the order.

Installation Accessories

Unless indicated otherwise, accessories can be used with either poly or metal plugs and receptacles

Handles



| NPT | Poly Handle | Metal* Handle | Cable Range | Nylon Handle | Neoprene Handle | Poly Handle w/Clamp & Bushing | Poly Handle w/built in Draw Grips |
|--------|-------------|---------------|---------------|--------------|-----------------|-------------------------------|-----------------------------------|
| 1/2" | 6PH12 | 6H12 | .50 - 1.25 | - | 31-611 | - | - |
| 3/4" | 6PH34 | 6H34 | .51 - 1.38 | FH611 | - | - | FH611-473 |
| 1" | 6PH1 | 6H1 | 1.250 - 1.375 | - | - | 6PM622 | - |
| 1 1/4" | 6PH114 | 6H114 | 1.438 - 1.562 | - | - | 6PM625 | - |
| 1 1/2" | 6PH112 | 6H112 | 1.562 - 1.688 | - | - | 6PM627 | - |
| | | | 1.688 - 1.812 | - | - | 6PM629 | - |

Notes:

- Finger draw plates are recommended for easier connector closure on cord to cord assemblies.
- For available cord grips, see pgs 177-178.
- * For metal devices only

For a guideline of NPT sizes based on cable ranges, see DS30 on pg 38.

Angles



| Nylon 30° Angle | Metal 30° Angle | Metal 70° Angle | Metal Angle+ Oversized 30° | Metal Straight Adapter | Metal Lateral Angle 30° |
|-----------------|-----------------|-----------------|----------------------------|------------------------|-------------------------|
| MP6 | MA6 | 89-6A027 | MA660 | MS6 | MAB6 |

* Mounts on oversize box only. Order with MB10 box. See page 44.

Junction Boxes



| NPT | Metal Box | Metal Box with Nylon Angle | Metal Box with Metal Angle | Poly* Conduit Entry | Poly 70°** Wall Box |
|--------|-----------|----------------------------|----------------------------|---------------------|---------------------|
| 1/2" | - | - | - | MC612 | 51-DA058 |
| 3/4" | - | - | - | MC634 | 51-DA058 |
| 1" | MB61 | 31-6A053-080-1 | 39-6A053-080-1 | MC61 | 51-DA058 |
| 1 1/4" | MB6114 | 31-6A053-080-114 | 39-6A053-080-114 | MC6114 | 51-DA058 |
| 1 1/2" | MB6112 | 31-6A053-080-112 | 39-6A053-080-112 | - | 51-DA058 |
| 2" | MB62 | 31-6A053-080-2 | 39-6A053-080-2 | - | 51-DA058 |

* For poly devices only

** 70° boxes are not drilled. Contact customer service if factory drilling is required.

Miscellaneous Accessories



Set of Two (2)

For Male Devices Only

For Male Devices Only

| Finger Drawplates | Protective Cap | Padlockable Cap | Inlet Spring-Loaded cap |
|-------------------|----------------|-----------------|-------------------------|
| FDP6 | 31-6A126 | DS6MC | 31-6A226 |

Accessory Spotlight

Finger Drawplates



Finger drawplates are recommended for easier connector closure on cord to cord assemblies.

Order Example

A typical order should include an inlet part number, a receptacle part number **AND** the matching handles, angles or other required accessories.



Male Inlet with Handle (Plug)
33-68243-C-K04 + FH611



Female Receptacle with Angle Adapter
33-64243-C-K04 + MP6



DECONTACTOR™ – 100A

Switch Rated Plugs & Receptacles

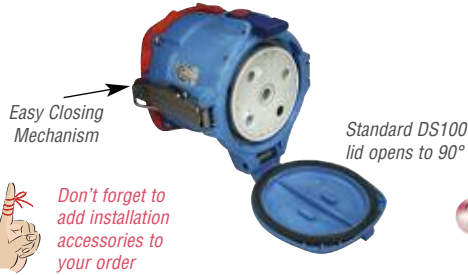
Ratings

- Voltage**
600 VAC, 250 VDC
- Switch Rating (AC Only)**
Branch Circuit
Disconnect Switching
- Short Circuit Rating**
65kA Close & Withstand
Testing was performed with RK5 time delay fuses sized at 100% of the devices rated ampacity.
- Environmental Ratings**
NEMA 3R, IP54/IP55*
*IP54 when the plug & receptacle are mated. IP55 on the receptacle alone when the lid is latched closed.
- Temperature Range**
Min -40°F/Max 140°F
See pg 204 for temps below -15°F.
- Wiring Capacity**
Min 4 AWG Max 1/0 AWG*
Aux Contacts - Max 14 AWG
*2/0 AWG is available upon request by adding suffix "E323" to the inlet or receptacle.
- Listings**
UL, CSA, NOM, IEC, CE*
*Contact Customer Service

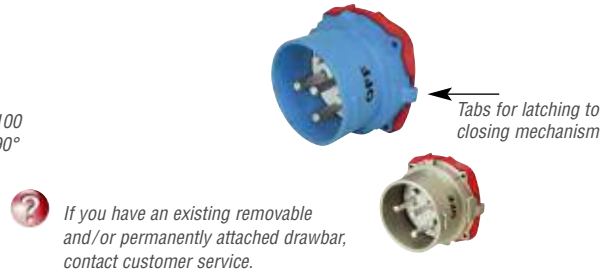
COMING SOON

Updated version of DS100 with up to 6 auxiliary contacts. Contact Customer Service for availability.

Receptacle (female)



Inlet (male)



| Voltage | Polarity | Part # | |
|----------|----------|----------|----------|
| | | Poly | Metal |
| 120/208V | 3P+N+G+ | 33-94167 | 37-94167 |
| 125V | 1P+N+G | 33-94075 | 37-94075 |
| 125/250V | 2P+N+G | 33-94076 | 37-94076 |
| 208V | 2P+G | 33-94162 | 37-94162 |
| 208V | 3P+G | 33-94163 | 37-94163 |
| 250V | 2P+G | 33-94072 | 37-94072 |
| 250V | 3P+G | 33-94073 | 37-94073 |
| 277V | 1P+N+G | 33-94045 | 37-94045 |
| 277/480V | 3P+N+G+ | 33-94047 | 37-94047 |
| 347/600V | 3P+N+G+ | 33-94147 | 37-94147 |
| 480V | 2P+G | 33-94042 | 37-94042 |
| 480V | 3P+G | 33-94043 | 37-94043 |
| 600V | 2P+G | 33-94142 | 37-94142 |
| 600V | 3P+G | 33-94143 | 37-94143 |

| Voltage | Polarity | Part # | |
|----------|----------|----------|----------|
| | | Poly | Metal |
| 120/208V | 3P+N+G+ | 33-98167 | 37-98167 |
| 125V | 1P+N+G | 33-98075 | 37-98075 |
| 125/250V | 2P+N+G | 33-98076 | 37-98076 |
| 208V | 2P+G | 33-98162 | 37-98162 |
| 208V | 3P+G | 33-98163 | 37-98163 |
| 250V | 2P+G | 33-98072 | 37-98072 |
| 250V | 3P+G | 33-98073 | 37-98073 |
| 277V | 1P+N+G | 33-98045 | 37-98045 |
| 277/480V | 3P+N+G+ | 33-98047 | 37-98047 |
| 347/600V | 3P+N+G+ | 33-98147 | 37-98147 |
| 480V | 2P+G | 33-98042 | 37-98042 |
| 480V | 3P+G | 33-98043 | 37-98043 |
| 600V | 2P+G | 33-98142 | 37-98142 |
| 600V | 3P+G | 33-98143 | 37-98143 |

Other voltage configurations are available – contact customer service + Auxiliary contacts not available with 4 pole/5 wire

Main Options

- Auxiliary/Pilot Contacts**
- Mushroom Pawl**
- Padlockable Mushroom Pawl**
- Self-Ejecting Devices**
* Requires straight insertion receptacle or inlet and self-ejecting plug or connector

See pgs 181-190 for detailed information on these options

Receptacle Options

Suffix

- With 2 Auxiliary/Pilot Contacts Recept # - 172
- With 3 Auxiliary/Pilot Contacts Recept # - 173+
- With 4 Auxiliary/Pilot Contacts Recept # - 174+
- With 5 Auxiliary/Pilot Contacts Recept # - 175+
- NEMA 4X Watertightness Recept # - 4X
- Straight Insertion Recept # - A188
- Self-Ejecting Connector Release Recept # - 348-A188
- Mushroom Pawl Recept # - 375
- Locking Mushroom Pawl Recept # - 845
- Padlockable Mushroom Pawl Recept # - 843
- Metal Pawl (on poly receptacle) Recept # - 824
- 180° Opening Lid++ Recept # - 180
- Closed Lid Configuration Recept # - NC
- With Auxiliary Switch Recept # - 270

Notes: + DS100 devices with 3 or more auxiliary/pilot contacts are not UL/CSA listed
++ Required when mating to rigid mounted male inlet

Inlet Options

Suffix

- With 2 Auxiliary/Pilot Contacts Inlet # - 172
- With 3 Auxiliary/Pilot Contacts Inlet # - 173+
- With 4 Auxiliary/Pilot Contacts Inlet # - 174+
- With 5 Auxiliary/Pilot Contacts Inlet # - 175+
- NEMA 4X Watertightness Inlet # - 4X
- Self-Ejecting Plug Release Inlet # - 338-A188
- Straight Insertion Inlet # - A188
- With No Lockout Hole Inlet # - A155
- For Auxiliary Switch* Inlet # - NNF

Notes: * Order inlet with P+N+G configuration and receptacle with P+G configuration

DS100 Order Example:

To order 2 auxiliary/pilot contacts on an inlet and receptacle add -172 to the part numbers.

DS100 Poly inlet 3P+G=33-98043-172

DS100 Poly receptacle 3P+G=33-94043-172

Appropriate accessory part numbers must also be included on the order.

Installation Accessories

Unless indicated otherwise, accessories can be used with either poly or metal plugs and receptacles

Handles



IP 66/67

| NPT | Poly Handle | Metal* Handle |
|--------|-------------|---------------|
| 3/4" | 9PH34 | 9H34 |
| 1" | 9PH1 | 9H1 |
| 1 1/4" | 9PH114 | 9H114 |
| 1 1/2" | 9PH112 | 9H112 |
| 2" | 9PH2 | 9H2 |

| Cable Range | Santoprene™ Handle | Poly Handle w/Clamp & Bushing |
|---------------|--------------------|-------------------------------|
| .70 - 1.00 | 65-9A013-D25 | – |
| 1.00 - 1.375 | 65-9A013-D35 | – |
| 1.250 - 1.375 | – | 9PM622 |
| 1.375 - 1.750 | 65-9A013-D45 | – |
| 1.438 - 1.562 | – | 9PM625 |
| 1.562 - 1.688 | – | 9PM627 |
| 1.688 - 1.812 | – | 9PM629 |

- Notes:**
- Finger draw plates are recommended for easier connector closure on cord to cord assemblies.
 - For available cord grips, see pgs 177-178.
 - * For metal devices only

- For a guideline of NPT sizes based on cable ranges, see DS30 on pg 38.

Angles



| Nylon 30° Angle | Metal 30° Angle | Metal 70° Angle | Metal Angle+ Oversized 30° | Metal Straight Adapter |
|-----------------|-----------------|-----------------|----------------------------|------------------------|
| MP10 | MA10 | 89-9A027 | MA110 | MS10 |

+ Mounts on oversize box only. Order with MB22 box. See page 46.

Junction Boxes



| NPT | Metal Box | Metal Box with Nylon Angle | Metal Box with Metal Angle |
|--------|-----------|----------------------------|----------------------------|
| 1 1/4" | MB10114 | 31-9A053-080-114 | 39-9A053-080-114 |
| 1 1/2" | MB10112 | 31-9A053-080-112 | 39-9A053-080-112 |
| 2" | MB102 | 31-9A053-080-2 | 39-9A053-080-2 |
| 2 1/2" | MB10212 | 31-9A053-080-212 | 39-9A053-080-212 |

Miscellaneous Accessories



For Male Devices Only



For Male Devices Only



| Protective Cap | Padlockable Cap Aluminum | Cord Grip with Mesh |
|----------------|--------------------------|---------------------|
| 31-9A126 | DS9MC | see pgs 177-178 |

Order Example

A typical order should include an inlet part number, a receptacle part number **AND** the matching handles, angles or other required accessories.



Male Inlet with Handle (Plug)
37-98043 + 65-9A013-D25



Female Receptacle with Angle Adapter
37-94043 + MA10

Feature Spotlight – Easy Closing Mechanism

A new and simplified closing mechanism is now standard on the DS100 and DS200 plugs and receptacles. This compact mechanism enables easy connection of the plug to the receptacle.

Note: After connection, the mechanism must be released to allow disconnection of the device.



1 The plug is partially inserted, clamps are placed around tab, ready to pull the plug into the receptacle



2 The handles are pushed down, the plug is fully drawn into the receptacle



DECONTACTOR™ – 200A Switch Rated Plugs & Receptacles

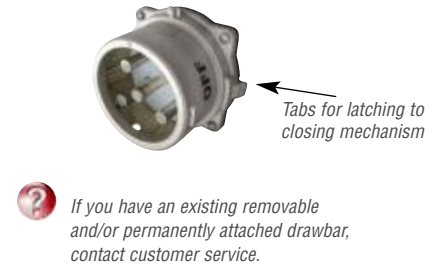
Ratings

- Voltage**
480 VAC
- Switch Ratings (AC Only)**
Branch Circuit
Disconnect Switching
- Short Circuit Rating**
65kA Close & Withstand
Testing was performed with RK5 time delay fuses sized at 100% of the devices rated ampacity.
- Environmental Ratings**
NEMA 3R, IP54/IP55*
* IP54 when the plug & receptacle are mated. IP55 on the receptacle alone when the lid is latched closed.
- Temperature Range**
Min -40°F/Max 140°F
See pg 204 for temps below -15°F.
- Wiring Capacity**
Min 4 AWG Max 3/0 AWG*
Aux Contacts - Max 14 AWG
* 4/0 is available upon request by adding suffix "A06" to the inlet or receptacle.
- Listings**
UL, CSA, NOM, IEC, CE**
** Contact Customer Service

Receptacle (female)



Inlet (male)



| Voltage | Polarity | Part # Metal |
|----------|----------|--------------|
| 120/208V | 3P+N+G | 37-24167 |
| 125V | 1P+N+G | 37-24075 |
| 125/250V | 2P+N+G | 37-24076 |
| 208V | 2P+G | 37-24162 |
| 208V | 3P+G | 37-24163 |
| 250V | 2P+G | 37-24072 |
| 250V | 3P+G | 37-24073 |
| 277V | 1P+N+G | 37-24045 |
| 277/480V | 3P+N+G | 37-24047 |
| 347/600V | 3P+N+G | - |
| 480V | 2P+G | 37-24042 |
| 480V | 3P+G | 37-24043 |
| 600V | 2P+G | * |
| 600V | 3P+G | * |

| Voltage | Polarity | Part # Metal |
|----------|----------|--------------|
| 120/208V | 3P+N+G | 37-28167 |
| 125V | 1P+N+G | 37-28075 |
| 125/250V | 2P+N+G | 37-28076 |
| 208V | 2P+G | 37-28162 |
| 208V | 3P+G | 37-28163 |
| 250V | 2P+G | 37-28072 |
| 250V | 3P+G | 37-28073 |
| 277V | 1P+N+G | 37-28045 |
| 277/480V | 3P+N+G | 37-28047 |
| 347/600V | 3P+N+G | - |
| 480V | 2P+G | 37-28042 |
| 480V | 3P+G | 37-28043 |
| 600V | 2P+G | * |
| 600V | 3P+G | * |

* See DR250 for 600V device page 145

Main Options



See pgs 181-190 for detailed information on these options

Receptacle Options

Suffix

| | |
|---------------------------------|---------------------|
| With 2 Auxiliary/Pilot Contacts | Recept # - 172 |
| With 3 Auxiliary/Pilot Contacts | Recept # - 173+ |
| With 4 Auxiliary/Pilot Contacts | Recept # - 174+ |
| With 5 Auxiliary/Pilot Contacts | Recept # - 175+ |
| NEMA 4X Watertightness | Recept # - 4X |
| Straight Insertion | Recept # - A188 |
| Self-Ejecting Connector Release | Recept # - 348-A188 |
| Mushroom Pawl | Recept # - 375 |
| Locking Mushroom Pawl | Recept # - 845 |
| Padlockable Mushroom Pawl | Recept # - 843 |
| 180° Opening Lid | Recept # - 180 |
| Closed Lid Configuration | Recept # - NC |
| With Auxiliary Switch | Recept # - 270 |

Notes: + DS200 devices with 3 or more auxiliary/pilot contacts are not UL/CSA listed
++ Required when mating to rigid mounted male inlet

Inlet Options

Suffix

| | |
|---------------------------------|--------------------|
| With 2 Auxiliary/Pilot Contacts | Inlet # - 172 |
| With 3 Auxiliary/Pilot Contacts | Inlet # - 173+ |
| With 4 Auxiliary/Pilot Contacts | Inlet # - 174+ |
| With 5 Auxiliary/Pilot Contacts | Inlet # - 175+ |
| NEMA 4X Watertightness | Inlet # - 4X |
| Self-Ejecting Plug Release | Inlet # - 338-A188 |
| Straight Insertion | Inlet # - A188 |
| With No Lockout Hole | Inlet # - A155 |
| For Auxiliary Switch* | Inlet # - NNF |

Notes: * Order inlet with P+N+G configuration and receptacle with P+G configuration

DS200 Order Example:

To order 2 auxiliary contacts on an inlet and receptacle add -172 to the part numbers.

DS200 Metal inlet 3P+G=37-28043-172

DS200 Metal receptacle 3P+G=37-24043-172

Appropriate accessory part numbers must also be included on the order.

Installation Accessories

Handles



Not NEMA 3R

| NPT | Poly Handle | Metal* Handle |
|--------|-------------|---------------|
| 1" | – | 2H1 |
| 1 1/4" | – | 2H114 |
| 1 1/2" | 2PH112 | 2H112 |
| 2" | 2PH2 | 2H2 |
| 2 1/2" | 2PH212 | 2H212 |

| Cable Range | Neoprene Handle |
|-------------|-----------------|
| 1.50 - 2.25 | 31-211 |

Notes: • For available cord grips, see pgs 177-178.

NPT Guidelines

| Cable Range | NPT |
|---------------|--------|
| .062 - .5 | 1/2" |
| .187 - .75 | 3/4" |
| .437 - 1.10 | 1" |
| .750 - 1.375 | 1 1/4" |
| .890 - 1.650 | 1 1/2" |
| 1.125 - 2.438 | 2" |
| 1.750 - 2.565 | 2 1/2" |

NPT sizes are determined by the cable diameter and third party cord grip.

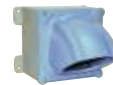
Angles



| Metal 60° Angle | Metal Angle+ Oversized 45° | Metal Straight Adapter |
|-----------------|----------------------------|------------------------|
| MA20 | MA220 | MS20 |

+ Mounts on oversize box only.

Junction Boxes



| NPT | Metal Box | Metal Box with Metal Angle |
|-----------|-----------|----------------------------|
| 1 1/2" | MB20112 | 39-2A053-080-112 |
| 2" | MB202 | 39-2A053-080-2 |
| 2 1/2" | MB20212 | 39-2A053-080-212 |
| Oversized | MB22212 | – |

Miscellaneous Accessories



For Male Devices Only



For Male Devices Only

| Protective Cap | Padlockable Cap Aluminum |
|----------------|--------------------------|
| 31-2A126 | DS2MC |

Feature Spotlight – Easy Closing Mechanism

A new and simplified closing mechanism is now standard on the DS100 and DS200 plugs and receptacles. This compact mechanism enables easy connection of the plug into the receptacle.

Note: After connection, the mechanism must be released to allow disconnection of the device.



The plug is partially inserted, clamps are placed around tab, ready to pull the plug into the receptacle



The handles are pushed down, the plug is fully drawn into the receptacle

Order Example

A typical order should include an inlet part number, a receptacle part number **AND** the matching handles, angles or other required accessories.



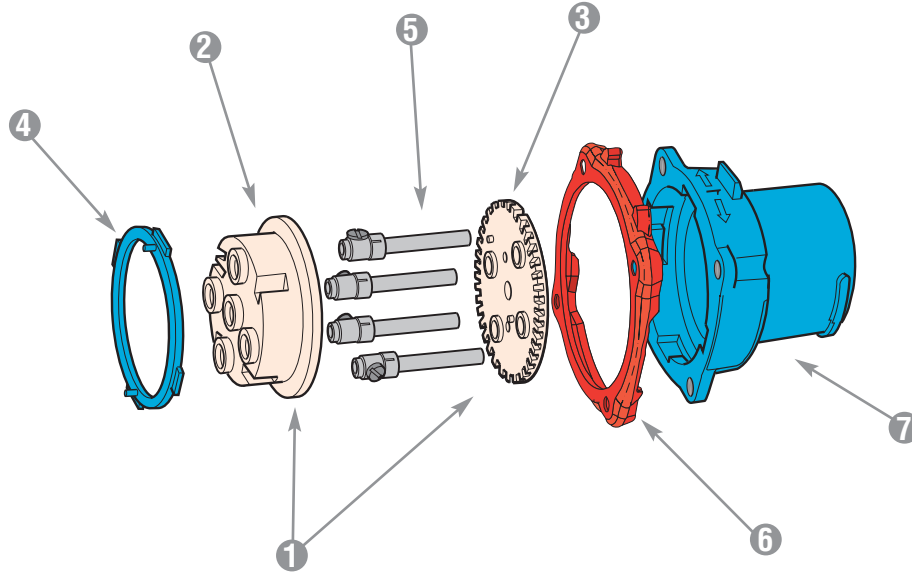
Male Inlet with Handle (Plug)
37-28043 + 31-211








Female Receptacle with Angle Adapter
37-24043 + MA20



Spare Parts Male Configuration



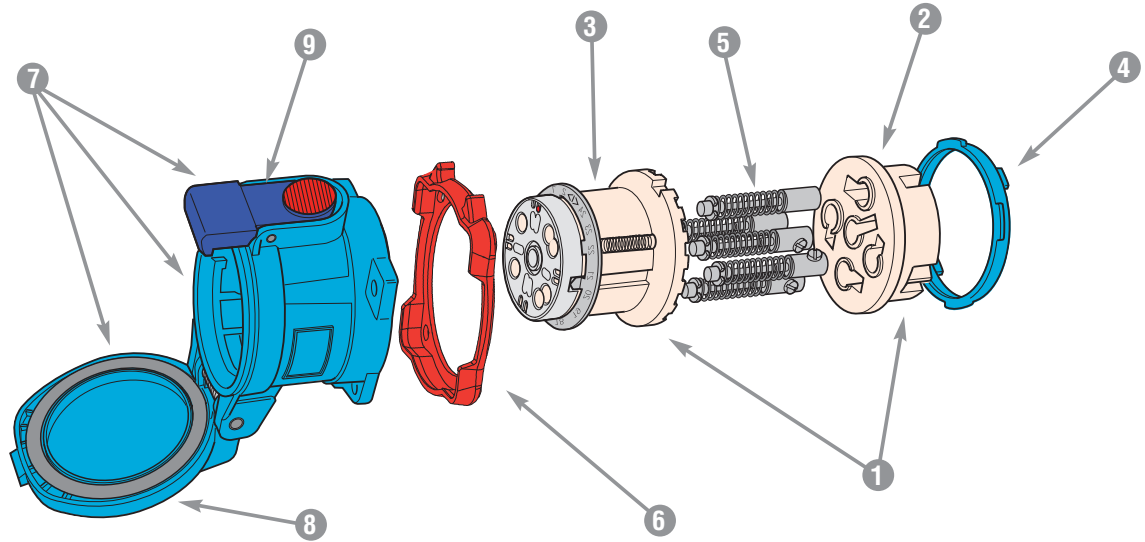
| | DS20 POLY | DS30 POLY | DS60 POLY | DS60 METAL | DS100C POLY | DS100C METAL | DS100 POLY | DS100 METAL | DS200 METAL |
|--|--|--------------|--------------|---------------|----------------|-----------------|---------------|----------------|----------------|
| 1 = Plug Interior*** | 31-1A010* | 31-3A010* | 31-6A010* | 31-6A010* | 31-6A010-C* | 31-6A010-C* | 31-9A010* | 39-9A010* | 39-2A010* |
| 1 = Plug Interior with Ground Contacts | - | - | - | 39-6A110* | - | 39-6A110-C* | - | 39-9A110* | 39-2A110* |
| 2 = Interior Bottom | 31-1A010-B | 31-3A010-B | 31-6A010-B | 31-6A010-B | 31-6A010-C-B | 31-6A010-C-B | 31-9A010-B | 39-9A010-B | 39-2A010-B |
| 3 = Interior Top | 31-1A010-T* | 31-3A010-T* | 31-6A010-T* | 31-6A010-T* | 31-6A010-C-T* | 31-6A010-C-T* | 31-9A010-T* | 39-9A010-T* | 39-2A010-T* |
| 4 = Polyester Locking Ring | 31-1A583 | 31-3A583 | 31-6A583 | - | 31-6A583 | - | 31-9A583 | - | - |
| 4 = Metal Locking Ring | - | - | - | 39-6A583 | - | 39-6A583 | - | 39-9A583 | 39-2A583 |
| 5 = Plug Contact | 31-1A011 | 31-3A011-380 | 31-6A011 | 31-6A011 | 31-6A011-C | 31-6A011-C | 39-9A011 | 39-9A011 | 39-2A011 |
| 6 = Color-Coded Voltage Gasket |  31-1AB26 | 31-3AB26 | 31-6AB26 | 31-6AB26 | 31-6AB26 | 31-6AB26 | 31-9AB26 | 31-9AB26 | 39-2AB26 |
| |  31-1AC26 | 31-3AC26 | 31-6AC26 | 31-6AC26 | 31-6AC26 | 31-6AC26 | 31-9AC26 | 31-9AC26 | 39-2AC26 |
| |  31-1AR26 | 31-3AR26 | 31-6AR26 | 31-6AR26 | 31-6AR26 | 31-6AR26 | 31-9AR26 | 31-9AR26 | 39-2AR26 |
| |  31-1AN26 | 31-3AN26 | 31-6AN26 | 31-6AN26 | 31-6AN26 | 31-6AN26 | 31-9AN26 | 31-9AN26 | 39-2AN26 |
| |  31-1AC26 | 31-3AC26 | 31-6AC26 | 31-6AC26 | 31-6AC26 | 31-6AC26 | 31-9AC26 | 31-9AC26 | 39-2AC26 |
| 7 = Plug Polyester Casing | 31-1A014** | 31-3A014** | 31-6A014** | - | 31-6A014** | - | 31-9A014** | - | - |
| 7 = Plug Metal Casing | - | - | - | 39-6A014** | - | 39-6A014** | - | 39-9A014** | 39-2A014** |
| Ground Ring (Not Shown) | - | - | - | 39-6A523 | - | 39-6A523 | - | 39-9A523P | 39-2A523 |






* Voltage and phasing positions must be specified (5th, 6th & 7th digit of Part #) to duplicate your shutter and alignment notches.

** For appropriate labeling on a device, please specify voltage, phasing, and product type

***For interiors with pilot contacts, contact Customer Service for part numbers.

Spare Parts Female Configuration



| | DS20 POLY | DS30 POLY | DS60 POLY | DS60 METAL | DS100C POLY | DS100C METAL | DS100 POLY | DS100 METAL | DS200 METAL |
|--|--|--------------|--------------|---------------|----------------|-----------------|---------------|----------------|----------------|
| ① = Receptacle Interior*** | 31-1A020* | 31-3A020* | 31-6A020* | 31-6A020* | 31-6A020-C* | 31-6A020-C* | 31-9A020* | 39-9A020* | 39-2A020* |
| ① = Receptacle Interior with Ground Contacts | - | - | - | 39-6A220* | - | 39-6A220-C* | - | 39-9A220* | 39-2A220* |
| ② = Interior Bottom | 31-1A020-B | 31-3A020-B | 31-6A020-B | 31-6A020-B | 31-6A020-C-B | 31-6A020-C-B | 31-9A020-B | 39-9A020-B | 39-2A020-B |
| ③ = Interior Top | 31-1A020-T* | 31-3A020-T* | 31-6A020-T* | 31-6A020-T* | 31-6A020-C-T* | 31-6A020-C-T* | 31-9A020-T* | 39-9A020-T* | 39-2A020-T* |
| ④ = Polyester Locking Ring | 31-1A583 | 31-3A583 | 31-6A583 | - | 31-6A583 | - | 31-9A583 | - | - |
| ④ = Metal Locking Ring | - | - | - | 39-6A583 | - | 39-6A583 | - | 39-9A583 | 39-2A583 |
| ⑤ = Receptacle Contact | 31-1A021 | 31-3A021-380 | 31-6A021 | 31-6A021 | 31-6A021-C | 31-6A021-C | 39-9A021 | 39-9A021 | 39-2A021 |
| ⑥ = Color-Coded Voltage Gasket |  31-1AB26 | 31-3AB26 | 31-6AB26 | 31-6AB26 | 31-6AB26 | 31-6AB26 | 31-9AB26 | 31-9AB26 | 39-2AB26 |
| |  31-1AC26 | 31-3AC26 | 31-6AC26 | 31-6AC26 | 31-6AC26 | 31-6AC26 | 31-9AC26 | 31-9AC26 | 39-2AC26 |
| |  31-1AR26 | 31-3AR26 | 31-6AR26 | 31-6AR26 | 31-6AR26 | 31-6AR26 | 31-9AR26 | 31-9AR26 | 39-2AR26 |
| |  31-1AN26 | 31-3AN26 | 31-6AN26 | 31-6AN26 | 31-6AN26 | 31-6AN26 | 31-9AN26 | 31-9AN26 | 39-2AN26 |
| |  31-1AC26 | 31-3AC26 | 31-6AC26 | 31-6AC26 | 31-6AC26 | 31-6AC26 | 31-9AC26 | 31-9AC26 | 39-2AC26 |
| ⑦ = Receptacle Polyester Casing with Lid | 31-1A024** | 31-3A024** | 31-6A024** | - | 31-6A024** | - | 31-9A024** | - | - |
| ⑦ = Receptacle Metal Casing with Lid | - | - | - | -39-6A024** | - | 39-6A024** | - | 39-9A024** | 39-2A024** |
| Ground Ring (Not Shown) | - | - | - | -39-6A523 | - | 39-6A523 | - | 39-9A523 | 39-2A523 |
| ⑧ = Lid Replacement Kit Polyester | 31-1A125 | 31-3A125 | 31-6A125 | - | 31-6A125 | - | 31-9A125 | - | - |
| ⑧ = Lid Replacement Kit Metal | - | - | - | 39-6A925 | - | 39-6A925 | - | 39-9A925 | 39-2A925 |
| ⑨ = Pawl Replacement Kit Polyester | 31-1A824 | 31-3A824 | 31-6A824 | - | 31-6A824 | - | 31-9A824 | - | - |
| ⑨ = Pawl Replacement Kit Metal | - | - | - | 39-6A824 | - | 39-9A824 | - | 39-9A824 | 39-2A824 |

* Voltage and phasing positions must be specified (5th, 6th & 7th digit of Part #) to duplicate your shutter and alignment notches.

** For appropriate labeling on a device, please specify voltage, phasing, and product type.

***For interiors with pilot contacts, contact Customer Service for part numbers.

For replacement parts contact customer service